

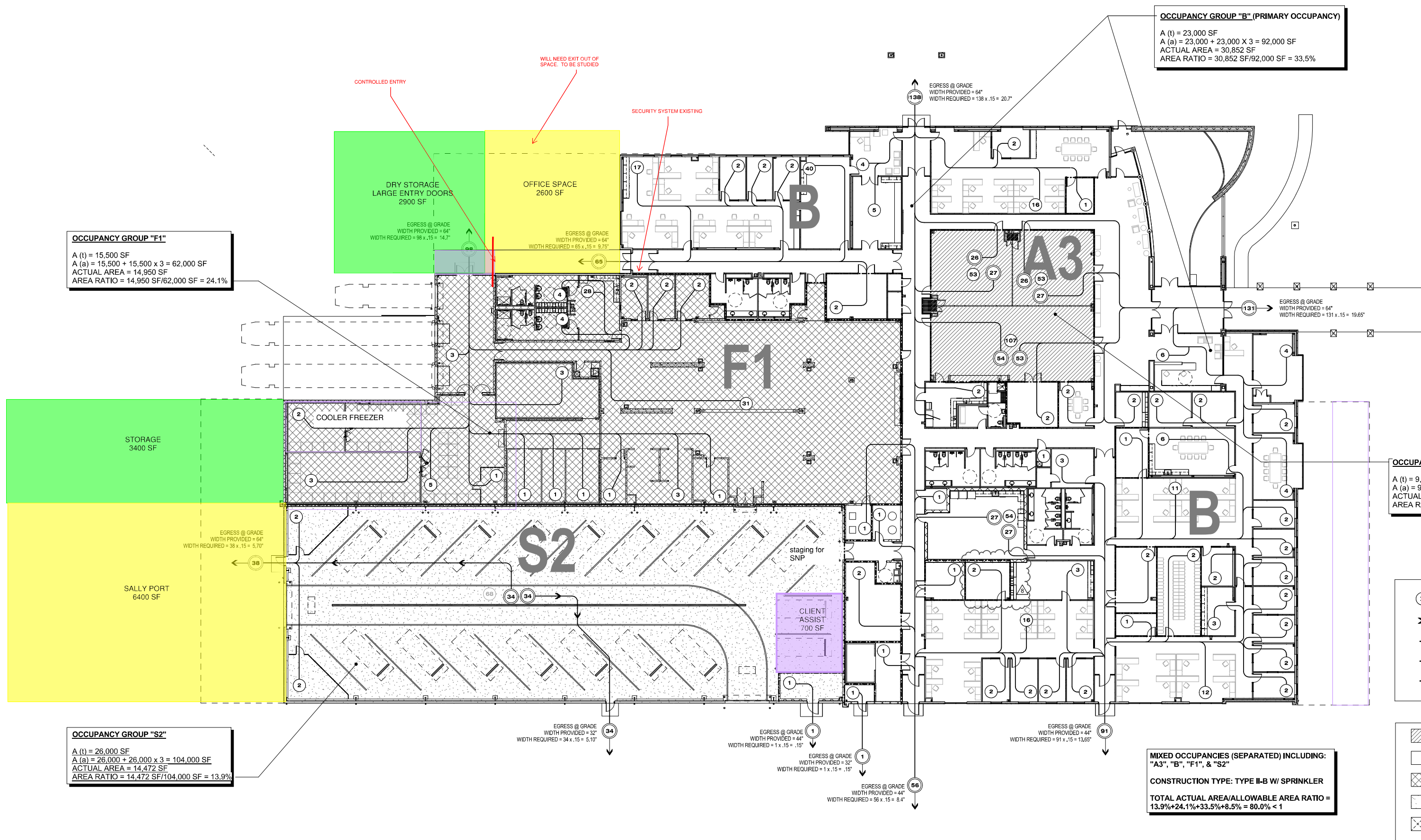
OCCUPANCY GROUP "B" (PRIMARY OCCUPANCY)
 A (t) = 23,000 SF
 A (a) = 23,000 + 23,000 X 3 = 92,000 SF
 ACTUAL AREA = 30,852 SF
 AREA RATIO = 30,852 SF/92,000 SF = 33.5%

OCCUPANCY GROUP "F1"
 A (t) = 15,500 SF
 A (a) = 15,500 + 15,500 x 3 = 62,000 SF
 ACTUAL AREA = 14,950 SF
 AREA RATIO = 14,950 SF/62,000 SF = 24.1%

OCCUPANCY GROUP "S2"
 A (t) = 26,000 SF
 A (a) = 26,000 + 26,000 x 3 = 104,000 SF
 ACTUAL AREA = 14,472 SF
 AREA RATIO = 14,472 SF/104,000 SF = 13.9%

OCCUPANCY GROUP "A3"
 A (t) = 9,500 SF
 A (a) = 9,500 + 9,500 x 3 = 37,500 SF
 ACTUAL AREA = 3,228 SF
 AREA RATIO = 3,228 SF/37,500 SF = 8.6%

**MIXED OCCUPANCIES (SEPARATED) INCLUDING:
 "A3", "B", "F1", & "S2"**
 CONSTRUCTION TYPE: TYPE II-B W/ SPRINKLER
 TOTAL ACTUAL AREA/ALLOWABLE AREA RATIO =
 13.9%+24.1%+33.5%+8.5% = 80.0% < 1



CONTROLLED ENTRY
 WILL NEED EXIT OUT OF SPACE. TO BE STUDIED
 SECURITY SYSTEM EXISTING

DRY STORAGE
 LARGE ENTRY DOORS
 2900 SF
 EGRESS @ GRADE
 WIDTH PROVIDED = 64"
 WIDTH REQUIRED = 98 x .15 = 14.7"

OFFICE SPACE
 2600 SF
 EGRESS @ GRADE
 WIDTH PROVIDED = 64"
 WIDTH REQUIRED = 65 x .15 = 9.75"

STORAGE
 3400 SF

SALLY PORT
 6400 SF
 EGRESS @ GRADE
 WIDTH PROVIDED = 64"
 WIDTH REQUIRED = 38 x .15 = 5.70"

COOLER FREEZER

CLIENT ASSIST
 700 SF

staging for SNP

EGRESS @ GRADE
 WIDTH PROVIDED = 32"
 WIDTH REQUIRED = 34 x .15 = 5.10"

EGRESS @ GRADE
 WIDTH PROVIDED = 44"
 WIDTH REQUIRED = 1 x .15 = .15"

EGRESS @ GRADE
 WIDTH PROVIDED = 32"
 WIDTH REQUIRED = 1 x .15 = .15"

EGRESS @ GRADE
 WIDTH PROVIDED = 44"
 WIDTH REQUIRED = 56 x .15 = 8.4"

EGRESS @ GRADE
 WIDTH PROVIDED = 64"
 WIDTH REQUIRED = 138 x .15 = 20.7"

EGRESS @ GRADE
 WIDTH PROVIDED = 64"
 WIDTH REQUIRED = 131 x .15 = 19.65"

EGRESS @ GRADE
 WIDTH PROVIDED = 44"
 WIDTH REQUIRED = 91 x .15 = 13.65"

1 CODE/EGRESS FLOOR PLAN
 1/16" = 1'-0"

- (X) INDICATE DIRECT
- LONGEST
- INDICATE
- INDICATE
- INDICATE CONSTR
- [Hatched Box] OCCUPANCY GROUP
- [White Box] OCCUPANCY GROUP
- [Cross-hatched Box] OCCUPANCY GROUP
- [Dotted Box] OCCUPANCY GROUP
- [Box with X] INDICATES MECHANICAL W/ 1-HR RATED WALL RATED CEILING/FLOOR RATED SUPPORTING